

Application: Tote Positioning @ Robot Loader

CUSTOMER: Toyota

LOCATION: Indiana

OPERATION: Robot Tray
 Pack Operation

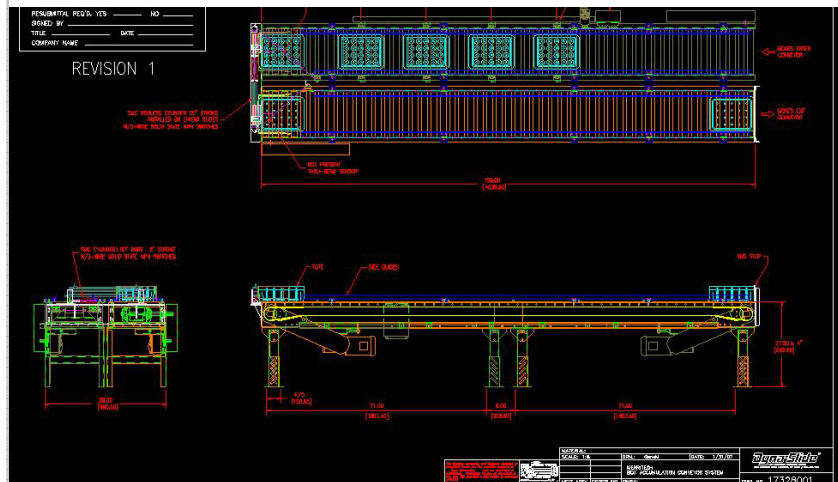
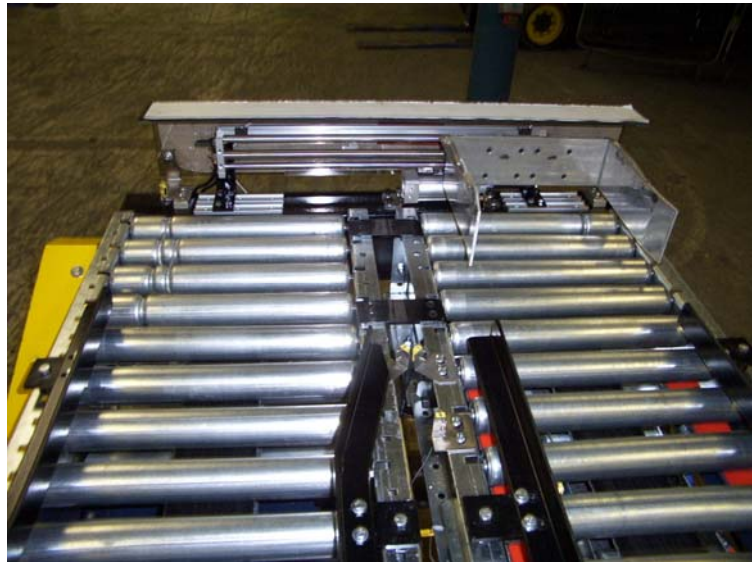
RATE: 10 ppm

CONTROLS: Integrated with
 Robot Controller

PARTS ENTER SYSTEM: Via
 Dyna-Slide Feeder to Dead
 Nest. Signal Provided Robot.
 Robot Pick Part Loads to
 Tray.

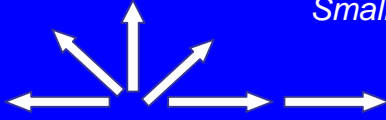
PARTS EXIT SYSTEM: When
 tray is full, it is automatically
 discharged from loading
 position and a new tray is
 positioned for loading. Full
 tray is positioned for
 labeling and palletizing.

**REASON FOR
 AUTOMATION:** Manpower
 Savings



We don't just manufacture equipment we manufacture solutions.....

Small, Large, Gentle Part Handling



Feed & Part Orientation Technologies

| | |
|----------------------------------|--------------------------------|
| Horizontal Vibratory Feeders | Horizontal Vibratory Conveyors |
| Accumulation Systems | V- Track Specialty Conveyor |
| Vibratory Bowl Feed Solutions | Twist Track Specialty Conveyor |
| Intelligent Bulk Supply Systems | Head Hanger Specialty Conveyor |
| Live Bulk Hoppers | Low Level Elevating Feeders |
| Step Feeders | Rotary Vibratory Feeders |
| Centrifugal Feeders | Belt Feeders |
| Press Outfeed Conveyors | Dual Belt Feeders |
| Flex Feeder Automation | Sortation & Separation Systems |
| Programmable Orientation Systems | Mechanical Orientation Systems |

Conveyor Technologies

| |
|--|
| Modular Low Profile Conveyors-Aluminum Construction |
| Power Belt Modular Belt Conveyor - Mild Steel |
| Power Belt Conveyors- Modular Stainless Belt Conveyors |
| Power Belt - Modular Sanitary Belt Conveyor Construction |
| Incline Conveyors Including Modular - Z Type Inclines |
| Incline-Cleats & Accordion Side Wall |
| Precision Index Conveyors |
| Sanitary Wire Mesh Belt Conveyors |
| Bulk Mover Belt Conveyor-Super Sanitary, USDA-FDA Construction |
| Modular Low Profile Conveyors-Stainless Construction |
| Modular Table Top Chain Conveyor-Aluminum Construction |
| Modular Table Top Chain Conveyors-Stainless Construction |
| Custom Assembly Pallet Handling Systems |
| Custom Chain Conveyors |

